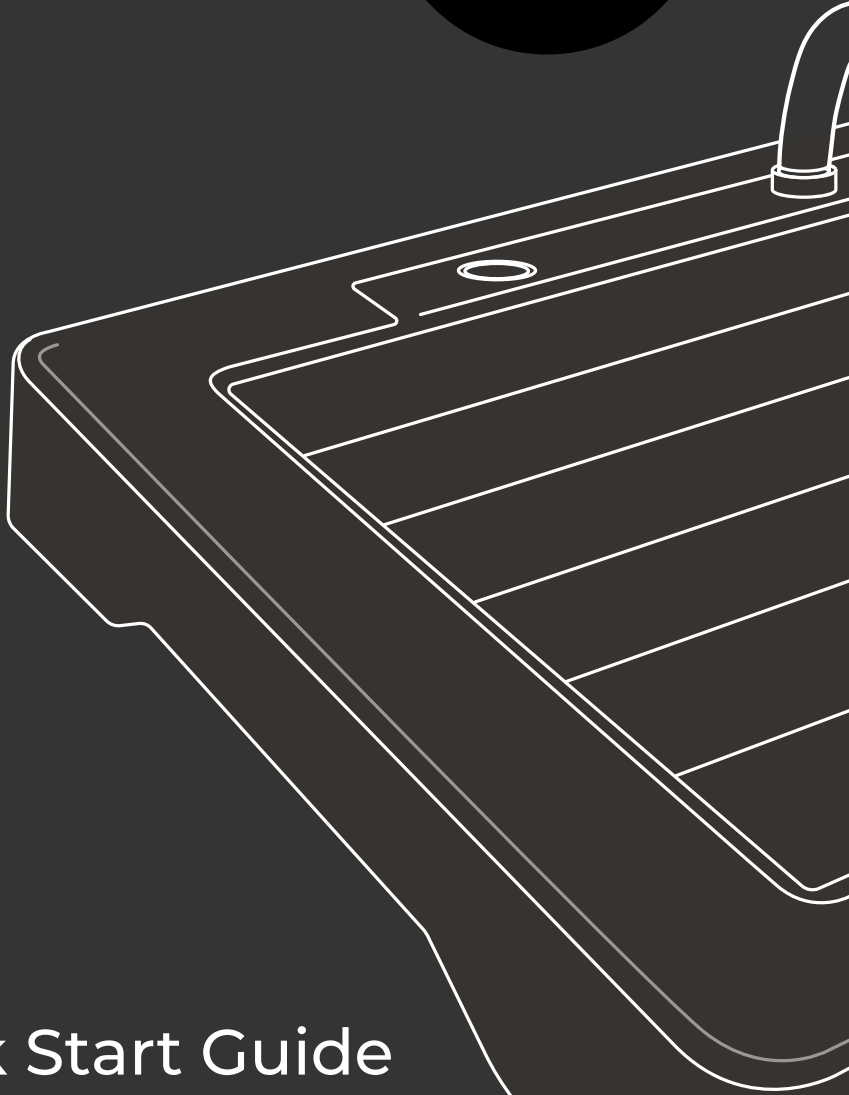




loopz
the endless shower



Quick Start Guide

v2.0

Enjoy your Loopz!

Please read the quickstart guide before using the Loopz. We would like to point out the safety instructions which are included in the box. All manuals are available at www.hamwells.com.



Save water, have a better shower

* UV-C LED is only included with the Loopz *Plus*

How to start?

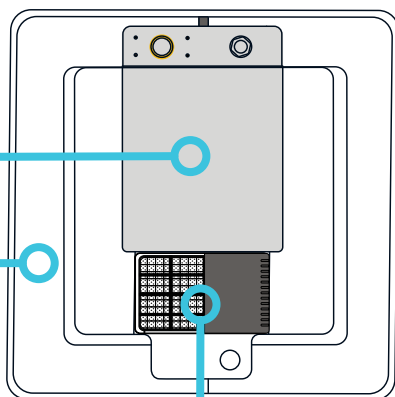
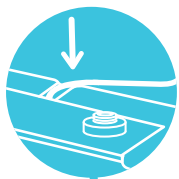
1. POSITION THE MODULE



Position the Loopz in such a way that there is a **slope towards the drain** to allow the water to flow towards it.

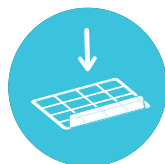
2. THE CONTROL UNIT

Place the control unit and guide the power supply out the module through its **cable duct**.



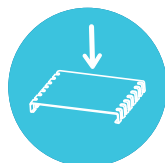
3. PLACE THE FILTER

Please note, the **raised edge** of the filter should **point upwards** and make contact with the **front end** (the side with the drain) of the module.



4. SUPPORT FOR THE DECK

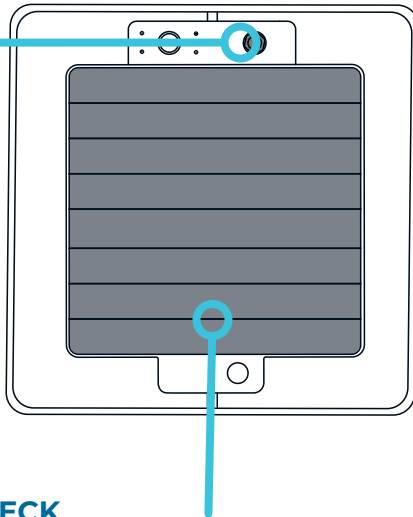
Position the **support** panel **above** the **filter**. Please note, the plain side of the panel should point upwards.





5. CONNECT THE SHOWER HEAD

Screw the **hose coupler** onto the thread on to the control panel. Please check if the **packing** of the hose is still in place.



6. PLACE THE DECK

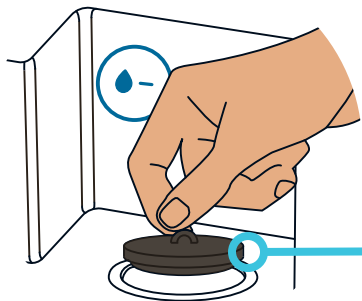
Make sure the **deck** falls into the **recess**. Please note, the Loopz's maximum load is 100 kg / 220 lbs.

7. CONNECT THE ADAPTER

Connect the Loopz's **12V power supply cable** to the **power adapter cable**. Connect the power adapter to a power source. Please note, the power adapter should be placed in a dry environment.



Filling the reservoir



8. PLACE THE PLUG

Place the plug in the reservoir. Remove the plug after use to drain the reservoir.



Please note, do not leave harmful substances in the environment.



9. CHECK THE WATER LEVEL

Fill the reservoir at least to the **indicated level**. Please check the LED on the control panel, it should be continuously on.



LED signal

The LED on the control panel has **three distinct patterns** giving feedback on the usage of the Loopz. These are: blinking, continuously on and fading in and out.

● ● ● fill the reservoir

— ready for use

— in use

Showering

10. USING THE LOOPZ

Once the LED is continuously on, the Loopz is ready for use.

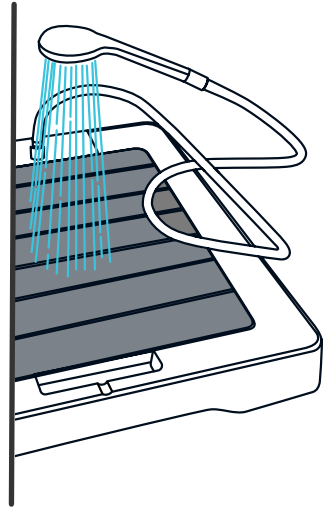
Press the push button to start the shower, push it again to stop.



Please note, the recycled water is not drinking water.



Please, limit the amount of soap used.



11. MAINTENANCE

Please note to **rinse the microfilter** after each shower using an external water source.

We advise to frequently clean the shower by **adding a mild detergent** to the water reservoir. Let the shower run for a few minutes and empty the reservoir afterwards. Furthermore, **remove the lid** of the **shower head** once in a while to get rid of any obstructions in the nozzles.

Questions? Mail us at loopz@hamwells.com



Hamwells Nederland B.V.
Pelgrimsstraat 3, 3029 BH Rotterdam,
The Netherlands

hamwells.com/loopz